

# BIOCHROM ASYS QUALITY CONTROL PLATE WITH WINQC SOFTWARE

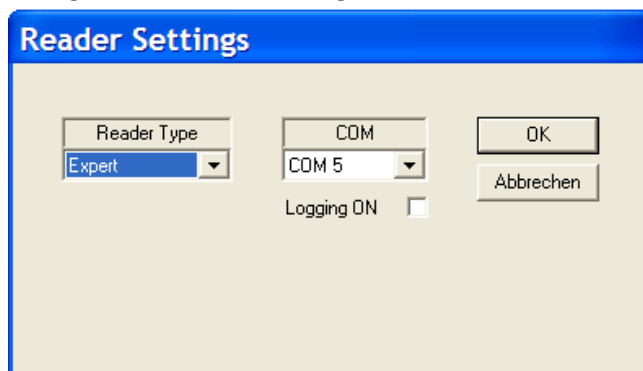
## VALIDATING THE PERFORMANCE OF YOUR BIOCHROM MICROPLATE READER



The Asys QC plate with WinQC software calibrates the positioning of the light path in the well, and the accuracy and precision of measurement. The Asys QC plate consists of a precisely machined aluminium plate with small bore holes for optical path alignment and neutral density filters for validation at standard wavelengths.

*Note: The neutral density filters on the Asys QC plate must be protected from dust, scratches, dirt and fingerprints to perform correctly. Please protect by handling with care and keep in the carrying case provided when not in use.*

1. Install the WinQC program on the PC that you will be connecting to the the instrument.
2. Connect instrument to a power source using the appropriate power cord. Switch on instrument.
  - ✓ Check the user's manual for important safety information.
3. Connect instrument to a PC using a serial port or USB cable (UVM340 ONLY).
4. Determine the communication port (com) used by the instrument. In the **Start** menu of the PC, go to **Control Panel\System\Hardware\Device Manager\Ports**. If you are uncertain about which com port is being used unplug the cable to the instrument and note which com port is no longer is use. Confirm by plugging the cable back in to the PC and com port will now appear in the Device Manager. Record the the number of which com port is used with the instrument.
  - ✓ Note: Only com ports 1-10 can be used with the WinQC.
5. Start the WinQC program by double-clicking on the WinQcd.exe or by configuring the installation procedure to open the program when completed.
6. Configure instrument settings:



Select **Settings>Reader**. In the resulting window, select instrument (reader) that will be validated and com port.

7. To confirm that the reader is connected to the PC select **Process>Initialize**. This will cause the plate transporter to move out if the instrument is connected.

8. Select **File>Open QC Reference File** to open reference file. Confirm that the reference file matches the serial number on the test plate container. The reference values for the specific test plate will open in the program with acceptable tolerances for each value.
9. Select **Settings>QC Settings**. Enter in user, lab or company name.
10. Select **Process> Calibrate Filters**. This process will be performed with the plate transporter in the out position.
11. Place Asys QC Test Plate in the plate transporter.
12. Select **Process> QC-measurement** to initiate calibration.
13. The calibration process will run for approximately 5 minutes. During the calibration the plate will be read ten times at each of the four standard wavelengths: 620, 492, 450 and 405 nm.
14. The data will open in the program when the calibration is complete. A summary of the calibration at each wavelength is reported in above the measurements at that wavelength at the right corner.
15. Data can be printed: **File>Print** or saved: **File>Save QC Results**.