

BIOCHROM ANTHOS ADAP SOFTWARE

TECH TIPS: TEST DEFINITION UPLOAD



1. Connect instrument to a power source using the appropriate power cord. Switch on instrument.
 - ✓ Check the user's manual for important safety information.
2. Connect instrument to a PC using a serial port or serial to USB adaptor.
3. Determine the communication port (com) used by the instrument. In the **Start** menu of the PC, go to **Control Panel\System\Hardware\Device Manager\Ports**.
4. Insert the CD supplied with the instrument into the PC that will be used to control the instrument. Install ADAP. Once the program is installed, open ADAP. ADAP will prompt for a user ID and password. For the first time the program is used, enter the the pre-set ID and passwords: **admin\admin**.
5. Once logged as **admin**, the **change password** button will appear. Select this option to set specific user IDs, passwords and administrative rights.

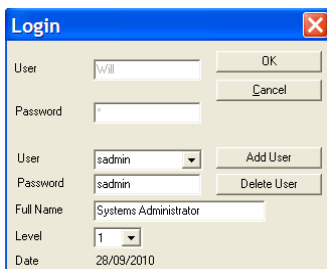


Figure 1 ADAP Login

Configure the login and users by entering in the user name and password and the level of administrator rights.

- **Level 1 (user)** can use ADAP for perform quick measurements or use test definitions to acquire and analyze data.
- **Level 2 (administrator)** can perform all basic measurements, create new test definitions for data collection and analysis and can configure system and instrument parameters.
- **Level 3 (system administrator)** has the same privileges as levels 1 and 2 as well as the ability to add, delete or edit users.

6. Select **Setup>Instrument** in the menu bar. A dialogue box will open:

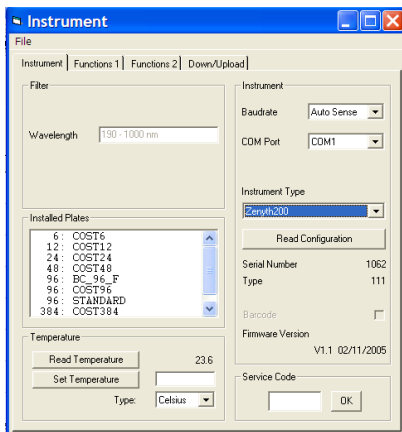


Figure 2 Connect to the Instrument In the **Instrument** tab, select

- **Baudrate:** select Auto Sense
- **COM Port:** select port or Auto Sense.
- **Instrument Type:** select instrument

- In the same window, select Down/Upload tab.

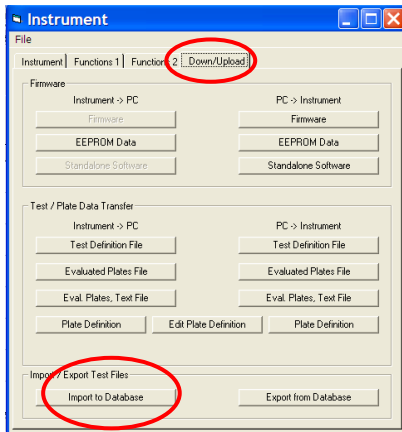


Figure 2 Down/Upload Window
Select **Import to Database** in the lower left corner.

- Browse the files in the PC and highlight the file of interest. Select open.
- Exit the window by selecting **File>Save**.
- To access test definition, select **Setup>Test Definition** and then **File>Open**. The new file will be available to open. Highlight and select OK.

