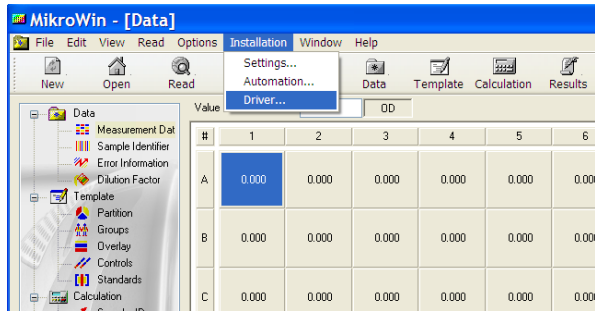


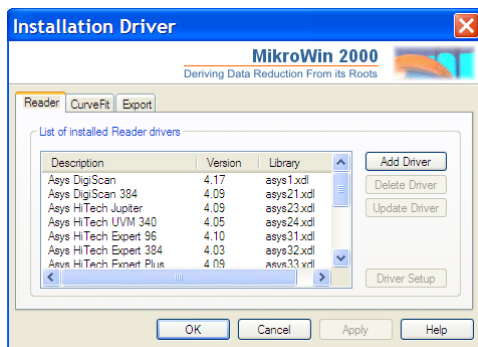
MikroWin Software

Technical Tips: Data Acquisition and Export

1. First, connect to the reader that will be used for the measurements. In the menu bar, select Installation>Driver:



2. Configure the reader connection by selecting reader.



3. Once the reader has been selected, select Driver Setup.



Set the COM port in use by the instrument. If you are unsure which port is being used, go to **Control Panel\System\Hardware\Device Manager\Ports**. To confirm that the instrument is connected, select **Get Filter Values**. If no error message appears and the correct filters appear in the filter setup box then the instrument is connected.

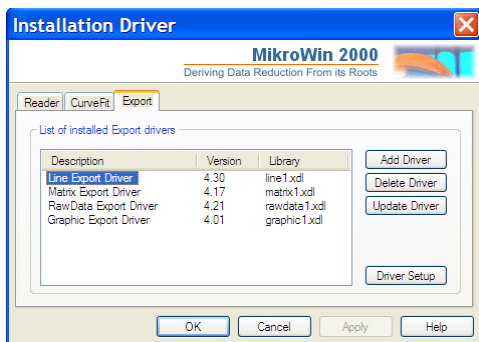
4. Now select Options>Read



If a reader is used that is capable of measuring other plate formats in addition to 96-well plates, then the plate type can be selected in Options in this window.

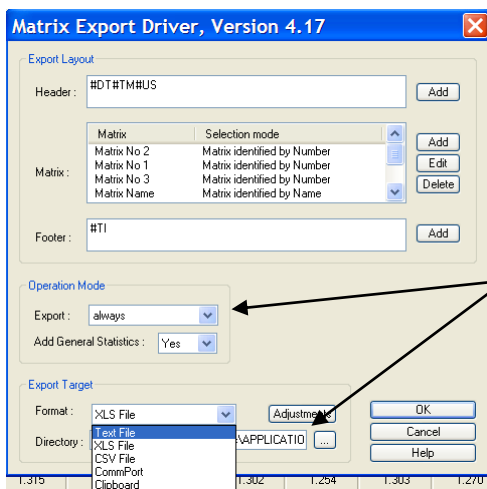
Set the Reader that will be used in Device, select the measurement and reference filter if used and the mode of measurement: Endpoint or Kinetics.

5. Configure the export settings. Go to Installation> Driver> Export and select the export driver that will be used.



There are four types of data export options:
 Line Export: Data will appear as a table
 Matrix Export: Data will appear as a matrix
 Raw Data Export: Data will appear as a list
 Graphic Export Driver: Graphs are exported

6. Each export driver can minutely configured using Driver Setup:



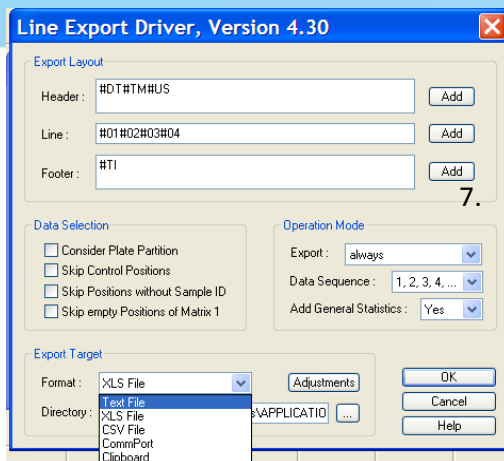
Matrix Export Driver

Information and data presentation can be selected.

Automatic export can be configured as well as location for export.

Several formats are also available for export: XLS, CSV and Text files can be opened in Excel.

Similar options are available for the Line Export Driver:



Line Export Driver

Once the export drivers are configured, next select Export Setup in File in the menu bar. Select the location and file name of the exported data.

7. Next, select File> Export Setup and select the export driver that will be used to export the data.



8. Now enter a file name and select Start:

